

ASCENT

A PUBLICATION OF THE COLBY COLLEGE OFFICE OF GIFT PLANNING

Donor Spotlight

The Power of Possibility: Donors Supporting Career Exploration and Experiences



Through thoughtful estate planning, a dedicated group of alumni and friends are ensuring that future generations of students have the guidance and opportunities they need to succeed. By including DavisConnects in long-term philanthropic plans, these donors are investing in a legacy of mentorship, exploration, and professional growth. Their generosity strengthens the bridge between classroom learning and meaningful careers, empowering students to pursue their ambitions with confidence and clarity for years to come.

Diana Abbasy P'05



Diana has included Colby in her estate plans in memory of her daughter, Shareen '05 (pictured), who passed away in 2009 after a courageous battle with cancer. Shareen's illness began while she was a student at Colby, and

Diana continues to feel profound gratitude for the compassion and support the College community showed their family during that challenging time.

"Colby made my daughter's dream of completing her college education, including a year abroad in France, possible. From the moment Colby heard of Shareen's fight with cancer, they were there supporting her and myself every step and turn ensuring her graduation would happen. I hope my gift in remembrance of Shareen will help ensure another student's dream of a French semester abroad comes true."

Delva King '77



Delva named Colby as the beneficiary of one of her retirement accounts in recognition of the important role the College played in her life. She believes deeply in the value of internships and

experiential learning during the college years, as well as the profound impact these opportunities can have on a student's future. Through her gift, she is proud to help ensure that students from culturally diverse backgrounds have access to these experiences.

"As a Colby alumna, I support DavisConnects because it ensures that today's students—regardless of background—have access to the guidance, networks, and experiential learning needed to translate a rigorous liberal arts education into purposeful post-graduate pathways. By embedding career exploration and mentorship throughout the undergraduate experience, DavisConnects strengthens outcomes while advancing equity. It is exactly the kind of support I wish had been available before I graduated in 1977."





Dear friends,

Spring is a season of renewal—a time when we look ahead with hope and reflect on the seeds we are planting for the future. At Colby, this season reminds us that the thoughtful plans we make today can grow into lasting impact for generations to come.

I am continually inspired by the foresight and generosity of those in our community who choose to include Colby in their estate plans. Through bequests, beneficiary designations, charitable trusts, and other planned gifts, you are helping ensure that our mission will remain strong and sustainable well into the future.

Planned giving is not only about financial stewardship—it is about values. It is about affirming what matters most to you and ensuring that your commitment to education continues beyond your lifetime. Each legacy gift, no matter the size, represents a powerful statement of belief in the work we do together.

This spring, we are pleased to share stories of individuals who have created lasting legacies through thoughtful planning in support of DavisConnects.

If you are considering a legacy gift, I would welcome the opportunity to speak with you confidentially about options that reflect your goals and values.

Thank you for being part of our community and for helping ensure that the promise of tomorrow remains bright.

Yours in gratitude,

Brooke Sukhavasi
Senior Associate Director of Gift Planning
Colby College

We're here to help.

Contact us at 1-800-809-0103 or giftplanning@colby.edu. You can also find us online at giftplanning.colby.edu.

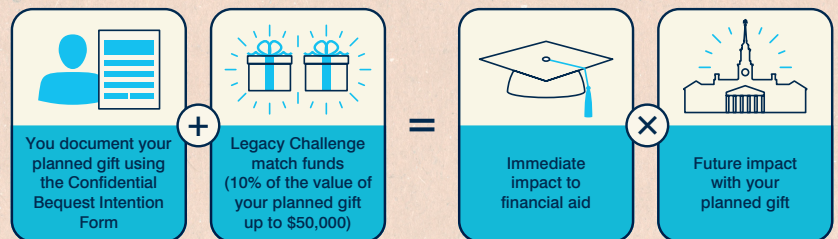
Leave Your Mark Legacy Challenge

We are pleased to share that an anonymous Colby leadership couple has pledged \$1 million to support financial aid at Colby College with the hope that this inspires others to support Colby through their estate plans.

Gifts documented after January 2026, such as a bequest intention or life income gift, will have 10 percent of their gift's value matched with an immediate, outright gift (up to \$50,000) to financial aid from anonymous donors.

That means you will support Colby in the years to come through your planned gift, and you will help build vital financial aid resources today, in partnership with other Colby supporters.

How It Works



In Memoriam

Colby College acknowledges alumni and friends who have recently passed away, leaving thoughtful bequests to the College:

- Leigh B. Bangs '58
- Richard B. Birch '51, P'82
- Stephen E. Chase '61
- Barbara Cook '64
- Harold D. Cross '53
- Robert E. Grindle '53
- Jane C. Lindquist '51
- Elisabeth Maley '50, P'81, '86

- Donald E. Megathlin '59, P'86
- Per Moen
- Theodore T. Nowick
- Jean C. Varnum '52, P'82
- Herbert M. Varnum P'82
- Prospere Sheldon Virden '78
- David C. Weber '47
- Mark S. Zaccaria '70

Bequest gifts from alumni, parents, and friends enable future generations of students to thrive at Colby.



Connecting Students to Opportunity: Inside DavisConnects

An interview with **Beth Throne, Dean of DavisConnects**

How would you describe DavisConnects and its services?

In 2017, through the generosity of the Davis family and trustee of its charitable foundation, Andrew Davis '85, LL.D. '15, Colby created DavisConnects, a centrally located, institutionally integrated center which helps students chart their unique path through and beyond Colby and provides access for every student to benefit from internships, research, and global experiences prior to graduation. DavisConnects also facilitates meaningful connections to Colby's world-class network of alumni and friends of the College who are energized to support our students in their personal and professional journeys.

How can the Colby community help DavisConnects?

Students find great value in hearing about the professional trajectories, industry insights, and life design advice the Colby community can provide. They also welcome the referral of internship, research, shadowing, and clinical and post-graduate job opportunities aligned with the many paths liberal arts students may pursue.

Where do you think DavisConnects will be in 5–10 years?

Over the coming years, DavisConnects will continue to evolve its staffing model, experiential and programmatic offerings, and our global connections and resources that are responsive to the rapidly changing world for which we are preparing students to thrive. DavisConnects, in collaboration with the Davis Institute for Artificial Intelligence and our other Centers of Thought, Impact, and Action, have empowered Colby students and graduates to secure opportunities despite the AI-impacted workplace. If we are to continue to prepare our students to succeed in their lives and work beyond Colby, we must continue this evolution.



What strategies do you use to increase student engagement?

At what point in their academic journey do students typically begin using your services?

DavisConnects engages with students even before they enroll and continues to do so in each of a student's four years at Colby. To date in this academic year, we have engaged over 80% of the entire student body. We provide access for every Colby student to benefit from an internship, research, and global experience, including over \$1 million dollars awarded yearly for student-originated ideas and global pursuits. That is also factored into our engagement and that is how we engage such a significant percent of the Colby student body yearly in the work of preparing them for their trajectories beyond College.

How do you build and maintain employer partnerships?

What industries recruit most actively from Colby and where do you see the most opportunity?

We have an industry and community partnerships team dedicated to cultivating opportunities across the many fields our liberal arts students pursue, while also working with Colby alumni, parents, and friends of the College who reach out regularly to recruit students for their opportunities. In each of the last five years, the top industries Colby students have pursued after graduation have included scientific research, financial services, education and education services, management and technical consulting, entertainment and media, and health, community and social services.



Campus Calendar

| | |
|----------------------------|---|
| April 15 | Distinguished AI Speaker Series: Bruce Holsinger |
| April 16 | Lipman Lecture: Ayelet Tsabari |
| April 30 | Colby Liberal Arts Symposium |
| April 30– May 2 | Colby Theater Company Spring Play: <i>Sagittarius Ponderosa</i> |
| May 2–3 | Colby Symphony Orchestra and Choirs at Colby: Choral Masterworks |
| May 9 | Island Campus Community Clean-up Day |
| May 24 | Commencement |
| June 5 | First Friday: Pride! At the Paul J. Schupf Arts Center |
| June 5–7 | Reunion |
| July 11 | Museum Summer Luncheon |
| July 26 | Island Campus Puffin Cruise |

For a complete list of events, visit events.colby.edu.

Guest Column

Plan Today, Protect Tomorrow: The Importance of Life Insurance and Estate Planning

Life insurance plays a vital role in financial planning. Beyond protecting families from the economic hardship that can follow the death of a loved one, life insurance actually has many applications; one of the most significant benefits is flexibility. This flexibility allows families to focus on adjusting to their new reality rather than worry about immediate financial pressures.

Some individuals choose to name a charity as a beneficiary to their life insurance policy, including a college or university one cares about. Charitable donations to an institution of higher learning can support scholarships, research programs, campus development, and other educational initiatives that are specifically valued by the donor.

By leaving a charity or an educational institution as beneficiary, the policy holder leaves a lasting legacy that benefits future generations. In 2025, I worked with an estate attorney to create my own comprehensive estate plan, thinking about what was important to me.

In 1982, I was a sophomore at Colby College. I decided that year I wanted to spend my junior year in Madrid, Spain. That decision changed my life. Naming Colby as one of the charities that I wish to support in my estate plan has given me a sense of peace. When I included Colby as one of the beneficiaries of my estate, I worked with the college to specify how I wanted my donation to be used. I wanted to support study abroad programs so that other students will have the same experience I had in 1982. My assets will now support not only my family and my loved ones but will also support ideals that are larger than me and will help others the way my support system helped me.



Kathryn Söderberg, CPCU '84
President
Söderberg Insurance Services, Inc.